

The logo consists of a dark blue square with the word "GLORY" in white, uppercase, sans-serif font centered within it.

GLORY

CYBER-WEB / BILLETTERIE.PRO

Overview GLORY Products & Pricing – CashInfinity Solutions
Alessandro Licata – April 2022

ABOUT GLORY



GLOBAL PRESENCE



Business in over
100
countries

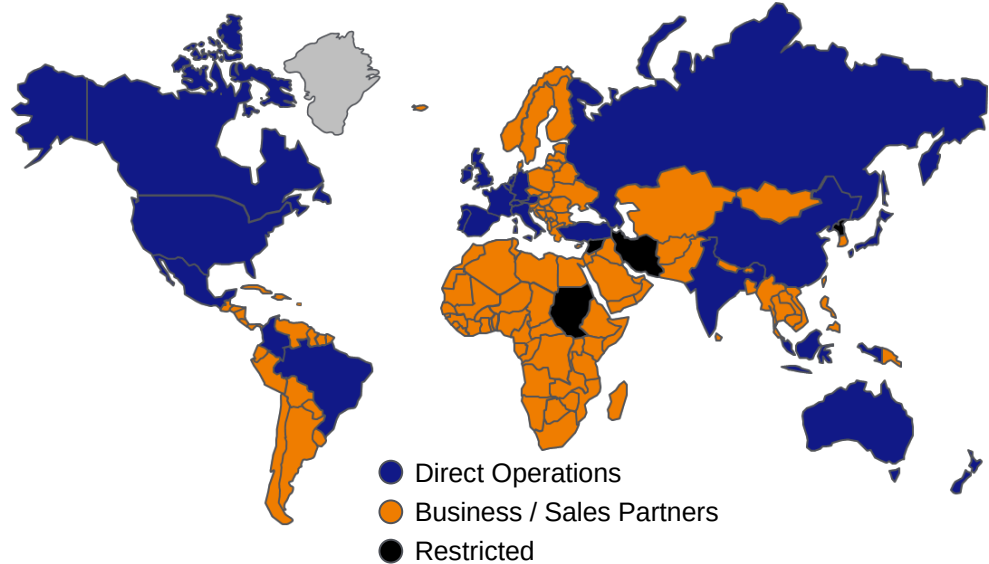


Over
11,000
employees



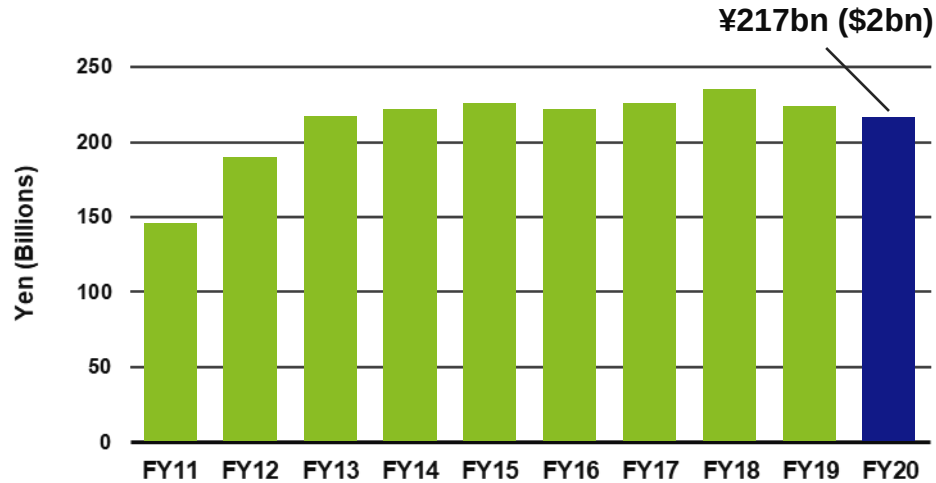
R&D investment:
7%
of Revenue

Glory Worldwide

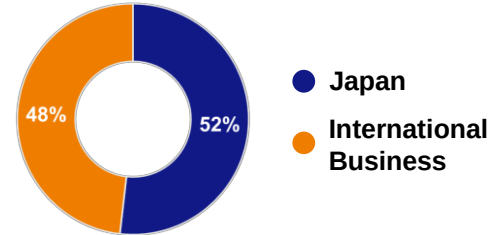


FINANCIALLY STRONG AND STABLE ORGANIZATION

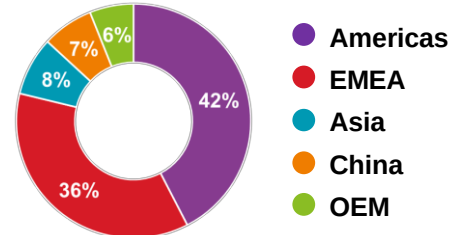
Glory Group Revenue



Revenue Split



International Business Revenue



THE INDUSTRIES WE SERVE



Many Industries, **Common Challenges**

SOLUTION PORTFOLIO

Retail Back Office



Cash recycling
& till preparation

Deposit automation /
speed to liquidity

Point Of Sale



Cash recycling
at point of sale

Self-Checkout and
full-service solutions



Software & Integration



POS Integration / retail
cash management

Collection & pick-up
solutions

Enterprise Services



Connected
service

Security /
compliance

Business
intelligence

Treasury
mgmt.

Optimising the retail cash chain

INDUSTRY CHALLENGES - RETAIL

Your Challenges...

In-store experience

Payment choice

Cash reconciliation / walk to bank

Cash security and shrinkage

Online shopping

Our Solutions...

Reduce bottlenecks in payment process

Prevent turning away customers who choose – or need – to pay with cash

Save time at beginning and end of shift / on-site deposits and change services

Enable secure closed loop cash management

Facilitate collection management



A RECOGNIZED INDUSTRY LEADER



Global leader in Teller
Cash Recyclers, with
market share of 56%

(2021)



Consistently ranked
among the
top global providers
to the financial
services industry
by IDC



Global leader in Retail
Cash Recycling
solutions, with
market share of 32%*

(2020)

**excludes Japan*



reddot design award
winner

Winner of multiple
Red Dot
design awards



CI-5

CASHINFINITY™
Small Cash Recycler System



reddot design award
winner 2019





CI-5 PRODUCT ARCHITECTURE

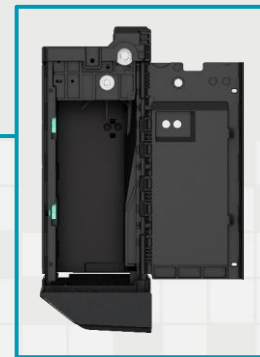
Coin Inlet
50 coins

Coin Outlet
50 coins



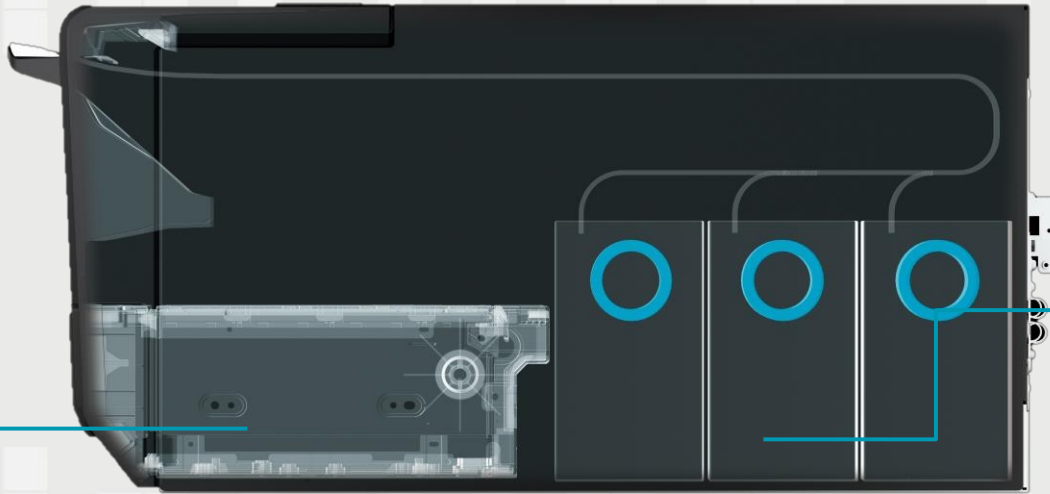
Cash Inlet
5 notes
(30 notes when the cover is open)

Cash Outlet
10 notes



Collection Box
150 notes
*Based on banknote thickness of 0.3mm

BANKNOTE MODULE



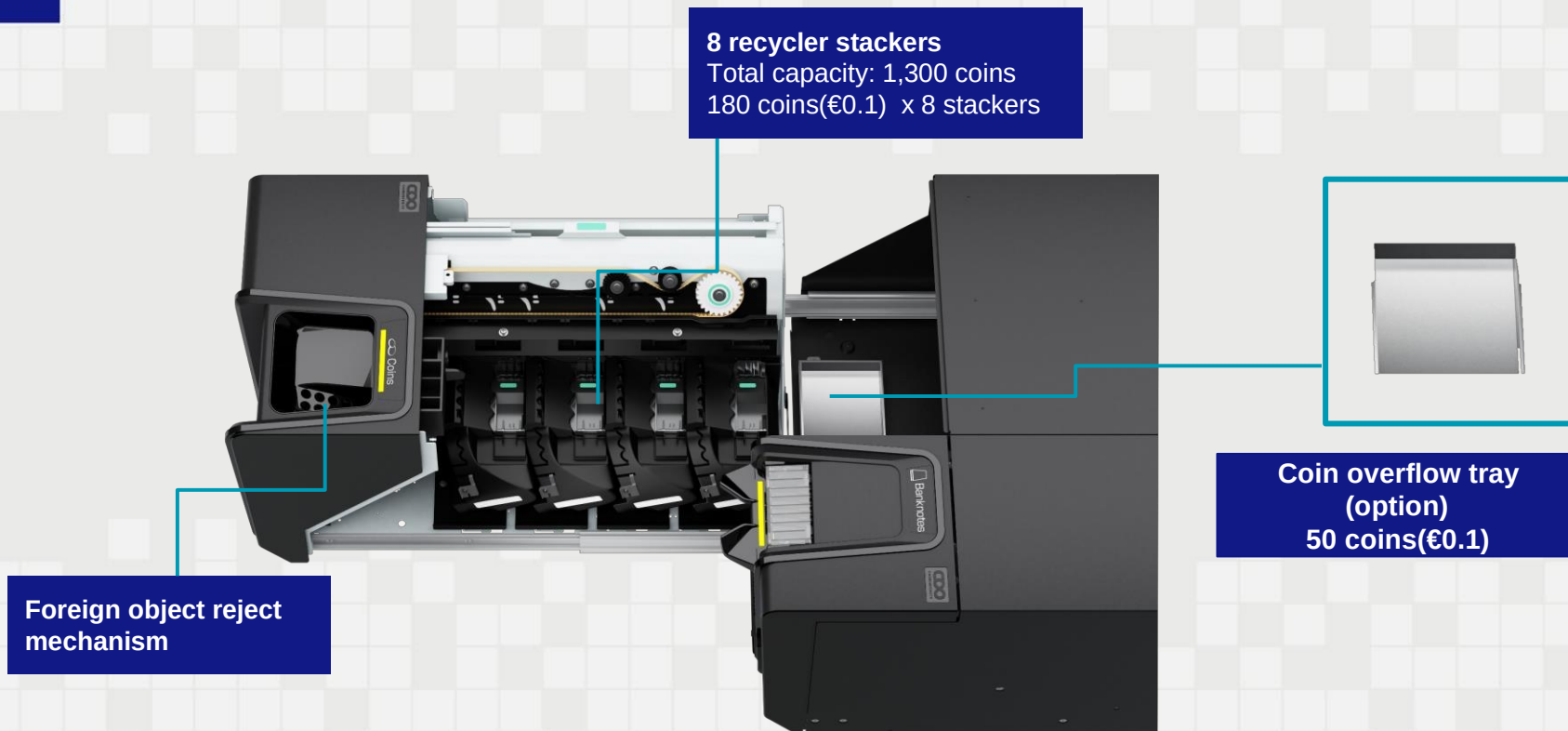
Collection Box

150 notes

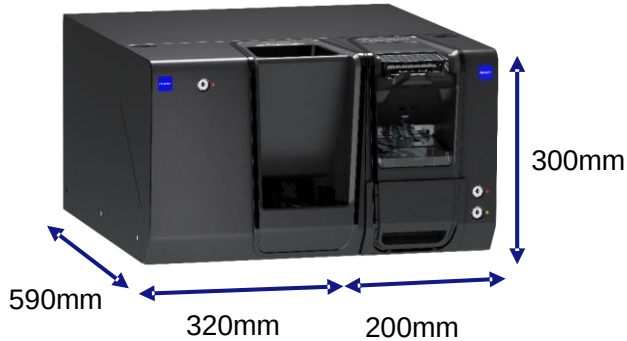
*Based on banknote thickness of 0.3mm

3 recycler modules
Total capacity: 150 notes
50 notes x 3

COIN MODULE



CI-5-FEATURES



Extract from Specification		CI-5B	CI-5C
Dimensions (W x D x H)		200 x 590 x 300mm 7.9" x 23.2" x 11.8"	320 x 590 x 300mm 12.6" x 23.2" x 11.8"
Weight		30 kg / 66 lbs.	35 kg / 77 lbs.
Function		'Follow me" LED sign	'Follow me" LED sign
Number of recycle modules		3 recycle modules Free layout recycle module	8 recycle modules Free layout recycle module
Capacity		50 notes/ recycler	2 / 0.5 EURO 90 coins 1 EURO 100 coins 0.2 EURO 120 coins 0.1 / 0.05 EURO 180 coins 0.02 EURO 230 coins 0.01 EURO 310 coins
Coin overflow capacity		-	Option - 50 coins (0.1 EURO)
Collection capacity		150 notes (based on banknote thickness of 0.3mm)	-
Total capacity of banknotes/coins		300 notes	Depends on a recycle module configuration
Deposit	Capacity of inlet:	5 notes (30 notes when hopper cover is open)	50 coins (0.1 EURO)
	Speed of cash in:	3 notes / sec	4 coins /sec
Dispensing	Speed of cash out :	10 notes	50 coins (0.1 EURO)
	Capacity of outlet:	3 notes / sec	3 coins / sec
Recognition unit		Counterfeit detection	Counterfeit detection
Software:		Interface software (ISP-K05F)	

THE BENEFITS GLORY RETAIL FRONT-OFFICE CASH AUTOMATION SOLUTIONS DELIVER

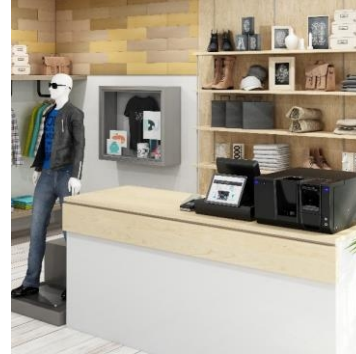
EFFICIENCY



CUSTOMER
EXPERIENCE



SECURITY



STAFF
EXPERIENCE

CI-5 FEATURES AND BENEFITS

Small footprint for installation in environments where space is limited



Quick, automated acceptance of customer payments and change provision that improves productivity and customer service

Collection box for easy transportation of cash, reduced cash exposure and eliminates discrepancies

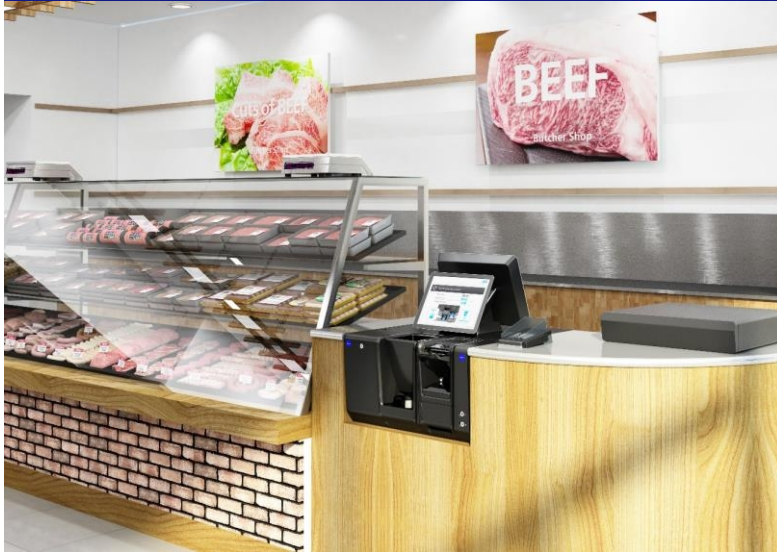


Automated cash handling improves hygiene in locations where cash and food are handled



FLEXIBLE USE – SELF-SERVICE OR CASHIER OPERATED

CI-5 can be positioned facing towards the customer, so there is no need for staff to handle cash, especially important in food retail environments



CI-5 can face towards the cashier and be used in an automated till for the acceptance of cash and issue of change to customers.



FLEXIBLE USE FOR A VARIETY OF RETAIL ENVIRONMENTS

Amusement Parks



Bakeries



FLEXIBLE USE FOR A VARIETY OF RETAIL ENVIRONMENTS

Bars/hospitality venues



Butcher



FLEXIBLE USE FOR A VARIETY OF RETAIL ENVIRONMENTS

Cafe



Clothing store

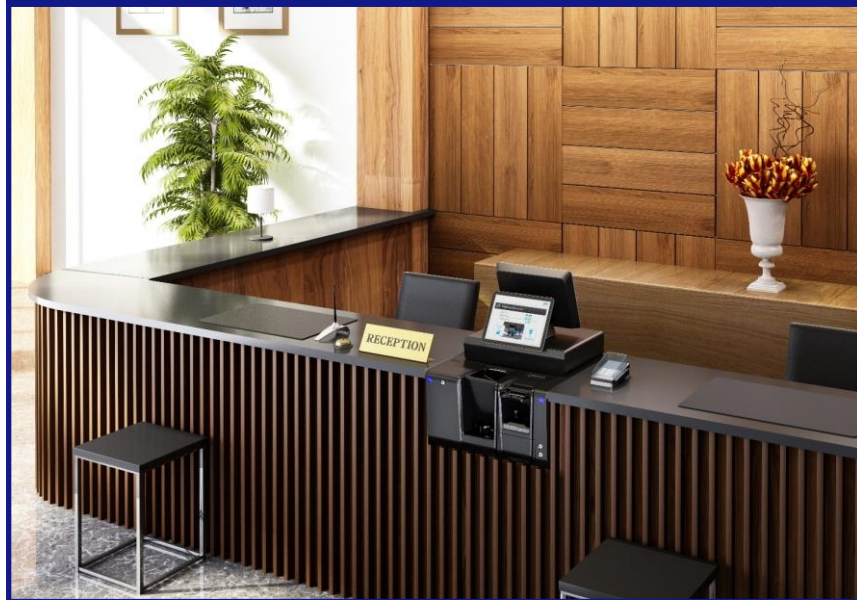


FLEXIBLE USE FOR A VARIETY OF RETAIL ENVIRONMENTS

Food courts/shopping malls



Hotels



FLEXIBLE USE FOR A VARIETY OF RETAIL ENVIRONMENTS

Pharmacy



Subway/transportation companies



GLORY

CI-10 PRODUCT INTRODUCTION

Compact Cash Recycler



CI-10 | PROVIDING IMPROVED EFFICIENCY FOR YOUR RETAIL OPERATION

Eliminate discrepancy



Reduced cash exposure



A focused and engaged staff



Greater cash handling efficiency



More secure environment



An enhanced customer experience



CI-10 | USAGE AND APPLICATIONS

- The CI-10 can be easily integrated into cash desks and self-checkouts.
- A “Follow me” LED sign assists the customer to operate the system independently and comfortably.
- If the CI-100 cash recycling system is added, the CI-10 and CI-100 offer a secure closed cash management solution.





CI-10 | PRODUCT ARCHITECTURE

BANKNOTE RECYCLER

Banknote Recycler:
RBW-100**



Cash
Inlet

Cash
Outlet

Slide extension:
YRCW-10**-TA

Collection cassette



3 roll storage modules & 1 collection cassette

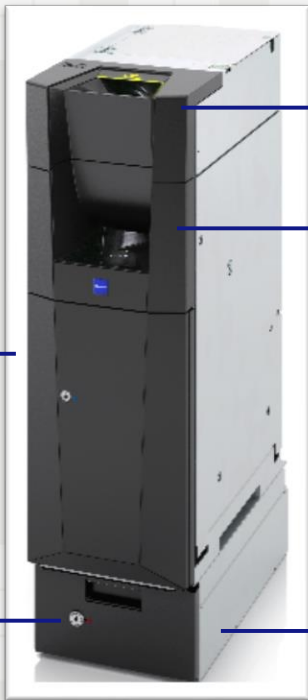
Capacity		Features
Recycling	100 notes x 3 RSMs, Total of 300 notes	Configurable RSM
Collection cassette	Stacking: 450 notes, Interface (RSM): 300 notes	Stylish design and “Follow me “LED sign
Inlet	<ul style="list-style-type: none"> ■ 10 notes at once when inlet cover is closed for deposit ■ 30 notes at once when inlet cover is opened to replenish 	Secure closed cash management with CI-100 (IF cassette)
Outlet	10 notes	Connectable with CI-Server
		Connectable to POS via FCC

Speed	
Speed	3 notes per second for deposit and dispense



CI-10 | PRODUCT ARCHITECTURE COIN RECYCLER

Coin recycler:
RCW-100**



Cash
Inlet

Cash
Outlet

Slide extension:
YRCW-10**-TA

Slide extension with
overflow tray:
YRCW-11**-TA

Slide Extension



8 coin stackers

Capacity	
Recycling	EURO, per stacker, configurable
	2 / 1 / 0.5 Approx. 150 coins
	0.2 Approx. 160 coins
	0.1 / 0.05 Approx. 200 coins
	0.02 Approx. 250 coins
	0.01 Approx. 350 coins
Overflow tray (optional)	Approx. 500 coins
Inlet	Up to 50 coins
Outlet	Up to 50 coins

Speed	
Speed	5 coins per second for deposit 4 coins per second for dispense

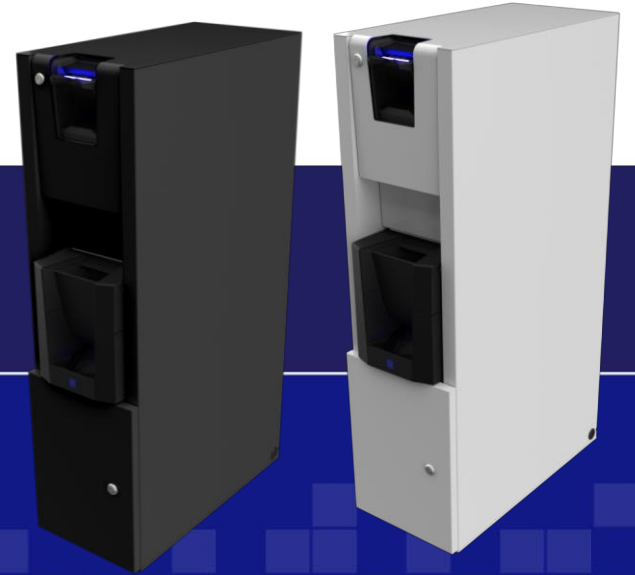
Features	
Configurable stacker	
Stylish design and “Follow me “LED sign	
Connectable with CI-Server	
Connectable to POS via FCC	

GLORY

CI-HYBRID 15

Payment Station

Simplified cash handling at the point of sale

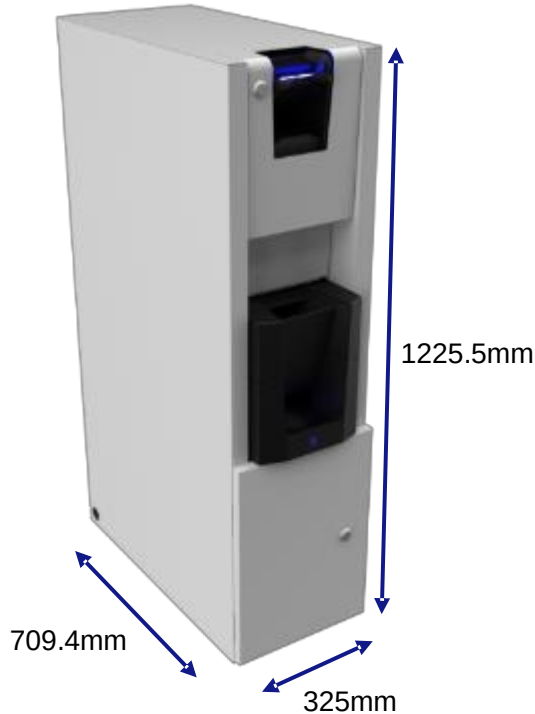


PRESENTING THE NEWEST SOLUTION IN THE PORTFOLIO



CI-HYBRID 15 PAYMENT STATION

CI-HYBRID 15 | SPECIFICATIONS



Extract from Specifications		CI-5B	CI-10C
Dimensions (h x w x d)		1225.5 × 325 × 709.4 mm	
Weight		183 kg Cabinet only : 79 kg	
Function		'Follow me" LED sign	'Follow me" LED sign
Number of recycle modules		3 recycle modules Free layout recycle module	8 recycle modules Free layout recycle module
Capacity		50 notes / recycler	2 / 1 / 0.5 EURO 150 coins 0.2 EURO 160 coins 0.1 / 0.05 EURO 200 coins 0.02 EURO 250 coins 0.01 EURO 350 coins
Coin overflow capacity		-	50 coins
Collection capacity		150 notes (based on banknote thickness of 0.3mm)	-
Total capacity of banknotes/coins		300 notes	Depends on a recycle module configuration
Deposit	Capacity of inlet:	5 notes (30 notes when hopper cover is open)	50 coins
	Speed of cash in:	3 notes / sec	5 coins / sec
Dispensing	Speed of cash out :	10 notes 3 notes / sec	50 coins 4 coins / sec
	Capacity of outlet:		
Recognition unit		Counterfeit detection	Counterfeit detection
Currencies :		EURO – Other currencies upon request	

CI-HYBRID 15 | KEY FEATURES

“Follow me” LED sign to guide customers with banknote and coin deposits and to take back their change



Exit shutter to avoid partial change to customer



Rejects unfit coins and foreign objects



Automatic banknote alignment; no need for the customer to present notes neatly



Counterfeit detection (banknote and coin)



**Complete solution**

Both note and coin recycling technology deployed into a payment station

**Improves hygiene**

Improves hygiene in locations where cash and food are handled

**Customer satisfaction**

Reduced queues and waiting times at the counter

**Easy to use**

Ideal solution for a payment station as it's simple to use

**Simple integration**

No need to modify existing store furniture or layout

**Compact foot print**

Can be installed even in the smallest retail stores

**Store efficiency**

Basic transactions are handled at the payment station enabling staff to focus on added-value activities

**Improves productivity**

Quick, automated acceptance of customer payments and change provision

CI-HYBRID 15 | A CHOICE OF INSTALLATION OPTIONS

SELF-CHECKOUT



PAYMENT KIOSK



THROUGH-THE-WALL



COMPACT FOOTPRINT

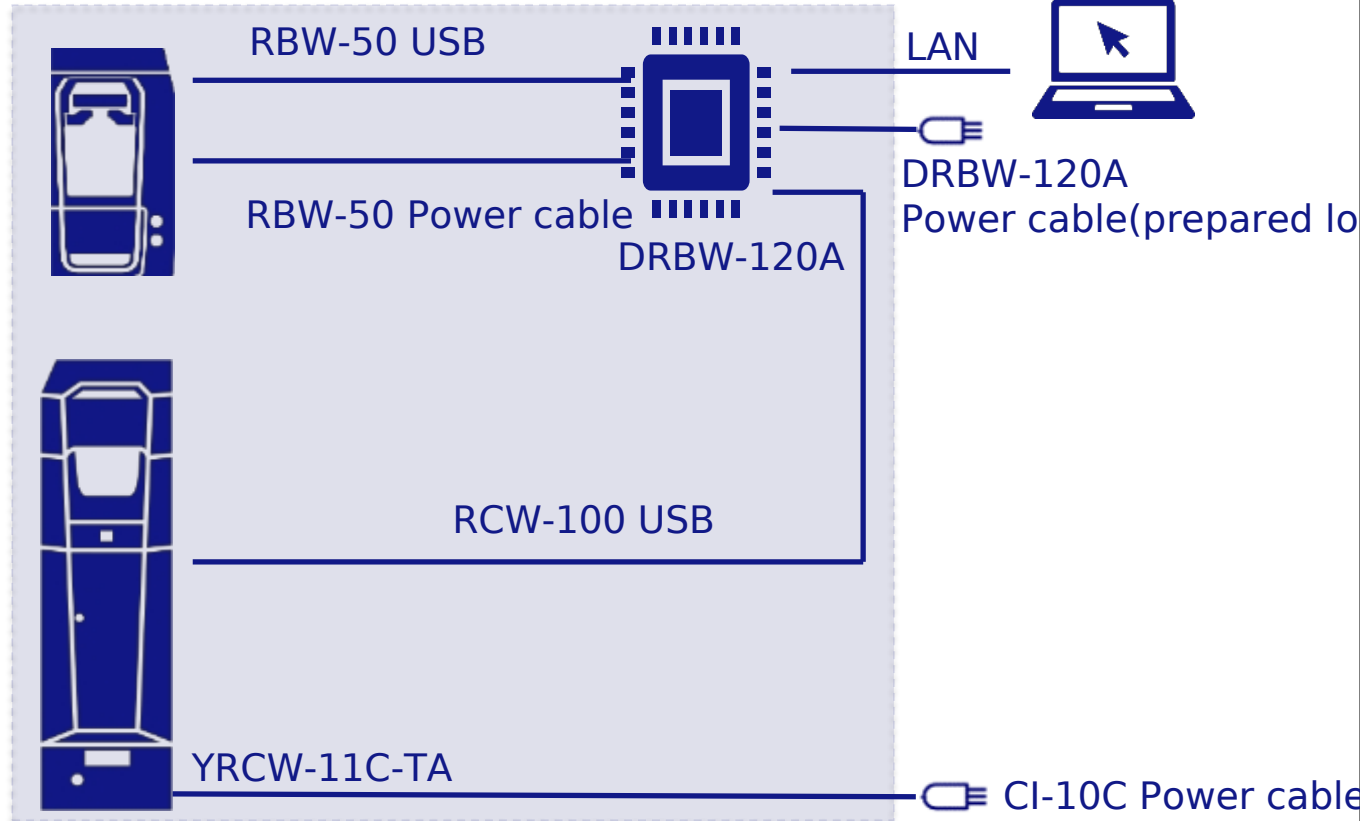


CI-HYBRID 15 | FULL CONFIGURATION

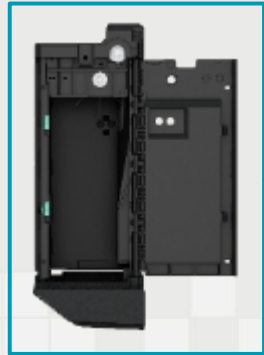


Cabinet

Standard : White
Order 20 units : Choice of one color



BANKNOTE RECYCLER: RBW-50 (CI-5B)

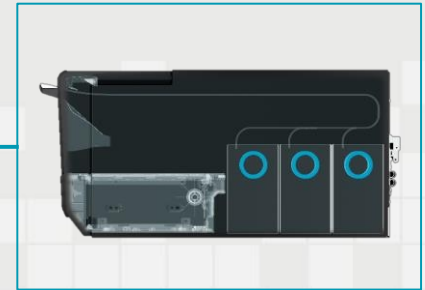
**Collection Box**

150 notes

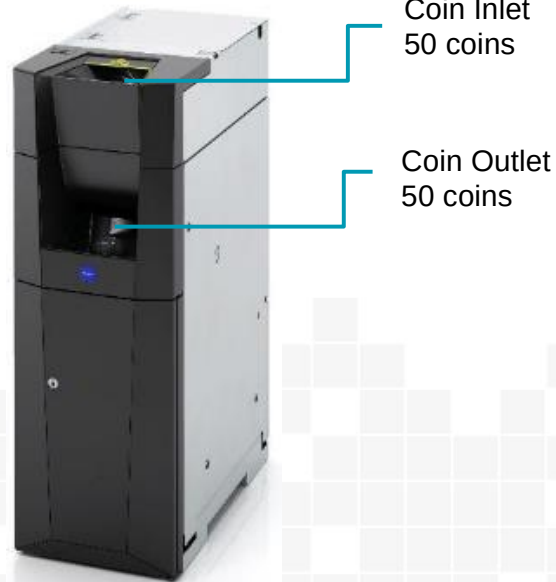
*Based on banknote thickness of 0.3mm

**Cash Inlet**5 notes
(30 notes when the
cover is open)**Cash Outlet**

10 notes

3 recycler modulesTotal capacity: 150 notes
50 notes x 3

COIN RECYCLER: RCW-100 (CI-10C)

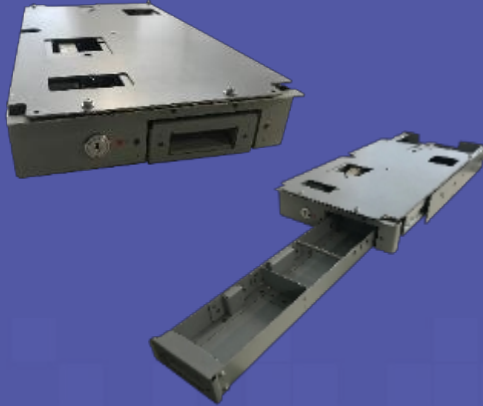


FCC & power supply DRBW-120A



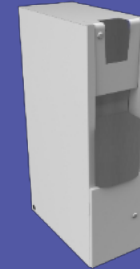
- Including Fan
- ISP-K05B

Lower slide extension unit YRCW-11C-TA



- Overflow capacity : Approx 50 pcs of 0.1 Euro.
- FCC can not be installed to YRCW-11C-TA.

Cabinet



- GLORY design
- Standard : White
(GN200130019010D1)
- Option: Black for orders of 20 units + (
GN200130019005D1)
- For any order of 20+ units, with a different RAL colour, please contact Glory.



reddot design award
winner 2018

CI-50B FRONT AND BACK OFFICE SOLUTION

CASHINFINITY™
Cash recycling system



FLEXIBLE USE

CI-50B can be utilised in the front or back office environment, providing additional application flexibility and significant business benefits.



Front
Office



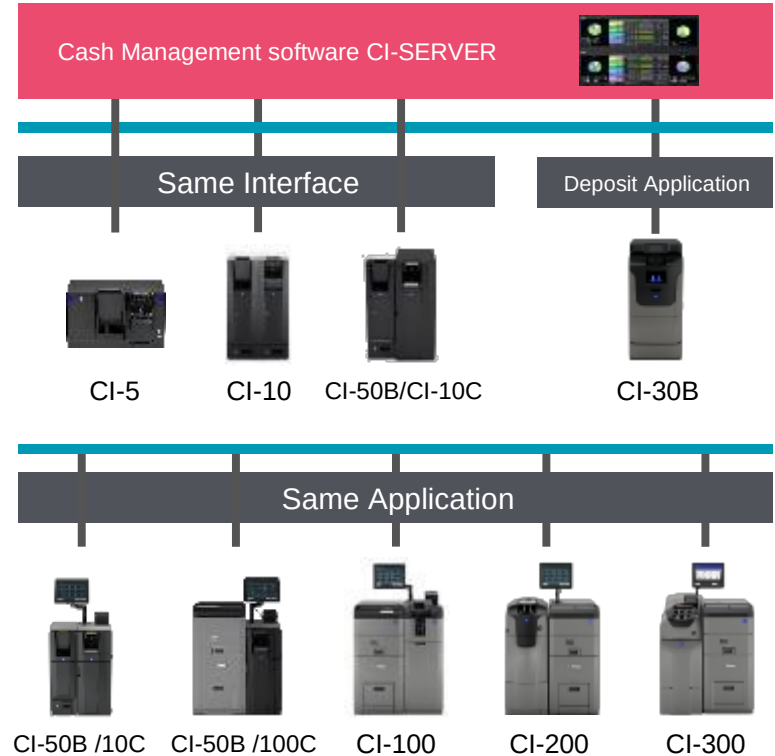
Back
Office





CI-50B OVERVIEW

- Adding to the CASHINFINITY portfolio
- Consistently controlled by powerful management software across the range
- Designed to support numerous retail segments and environments
- Optimises the retail cash chain for both front and back office operations
- Same connectivity interface
- Same system platform



PRODUCT OVERVIEW

CI-50B



SAFE LINE UP AND DATA SECURITY

Safe range and options

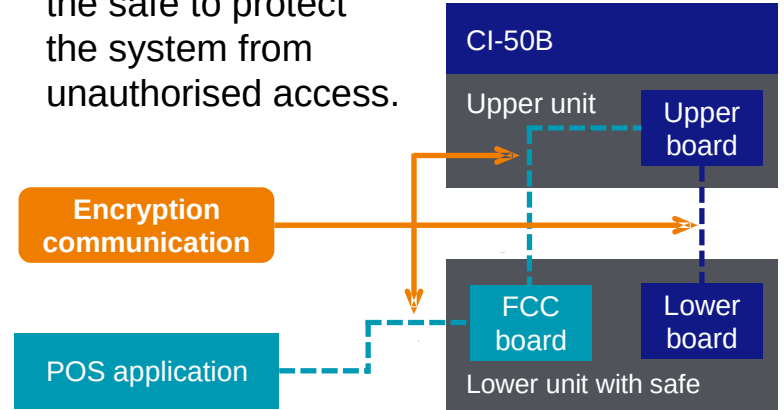
- CI-50B incorporates a secure safe structure
- Available with a range of safe options



UL Safe & CEN-III

Data security

- Internal / external data is secured by encrypted data communications.
- PC located inside the safe to protect the system from unauthorised access.



FLEXIBLE STORAGE MODULES

The CI-50B has 3 recycler component configurations and up to 6 recycler modules. The system provides the flexibility to handle foreign currencies and to store various denomination capacities.



4 recycler modules

Total capacity: 1,200 notes
300 notes x 4



5 recycler modules

Total capacity: 1,200 notes
300 notes x 3 +
dual drum(100 +200) x 1

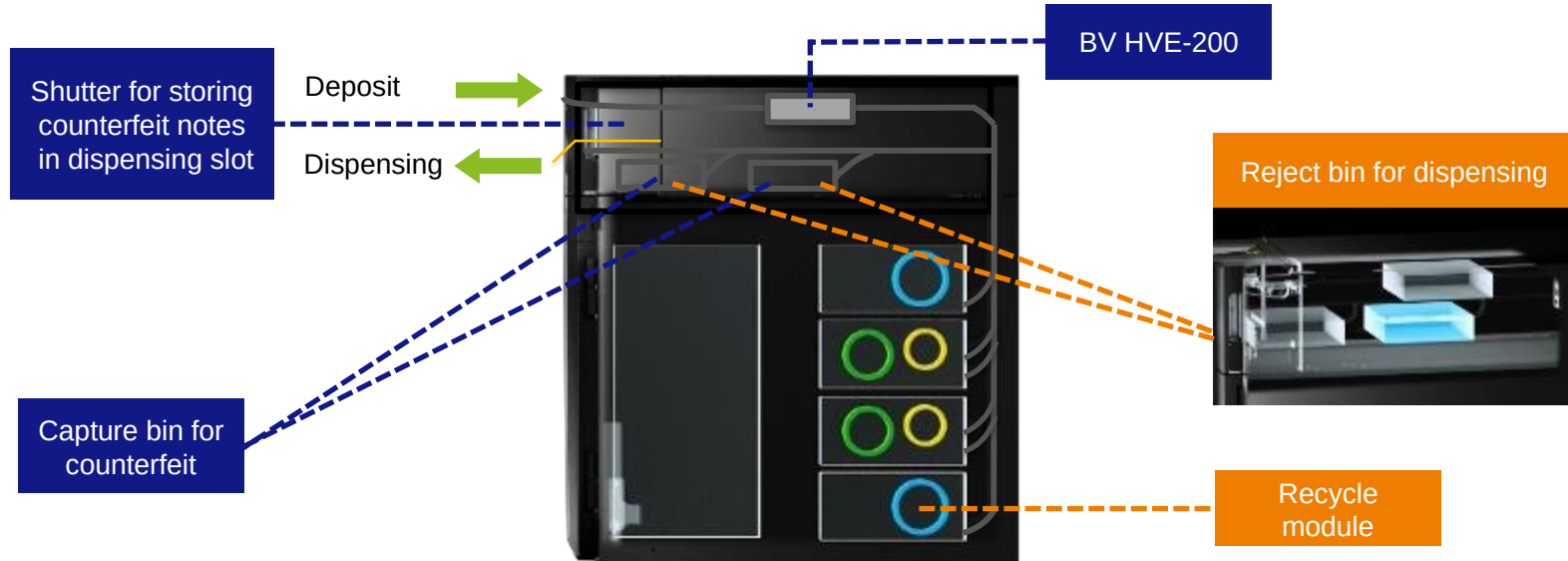


6 recycler modules

Total capacity: 1,200 notes
300 notes x 2 +
dual drum(100 +200) x 2

HIGH-LEVEL BANKNOTE AUTHENTICATION

Provides speedy and accurate note handling capabilities, achieved through high-level banknote authentication. CI-50B integrates a capture bin for isolating detected suspect banknotes.



CASHINFINITY™ | AN END-TO-END CASH MANAGEMENT SOLUTION



- **Remote Monitoring Solution:**
Customisable application to manage, monitor and track cash
- **Front-office recycling solutions:**
Flexible solutions to handle and secure cash at the front line
- **Back-office recycling solutions:**
Flexible solutions that optimise and secure cash handling processes



CASHINFINITY | IMPROVED CASH MANAGEMENT IN THE BACK OFFICE



- **Automated back office cash handling processes:**
 - Eliminate all manual cash counting
 - Reduce time to prepare change funds
 - Reduce end-of-day reconciliation times and process
 - Real-time status of cash inventory
- **Secure back-office cash management:**
 - Cash in/out per cashier recorded
 - Cash tracking throughout the store

CASHINFINITY | IMPROVED CASH MANAGEMENT IN THE BACK OFFICE



- **Improve fund efficiency:**
 - Quick cash deposit preparation – for CIT collection or for the bank
 - Reduces the need for frequent replenishment/money orders
 - Optimises CIT deliveries and pick-ups
- **Protect your investment**
 - Optimised maintenance
 - Device real-time status alerts
 - Regular application updates

FLEXIBLE USE

Super / Hypermarket / Discount store



Gas station / Convenience store



FLEXIBLE USE

Restaurant / Food court



Back office



CONFIGURATIONS AND SPECIFICATION





SPECIFICATIONS (EMEA)

CI-50B



Note unit CI-50B
(UL-291 24-hour)

Collection cassette

CI-50B banknote recycler for EMEA			
Deposit	Capacity of inlet: Up to 100 notes 100 notes(with cover opened) / 5 notes (with cover closed) Speed of cash in: 5 notes / sec.		
Dispense	Capacity of outlet: Up to 10 notes Speed of cash in: 4 notes / sec		
Recognition	HVE-200, Counterfeit detection Fit /unfit detection		
Recycle	Total 1,200 notes App. 300 notes x 3 + dual drum(100 notes+200 notes) x 1 App. 300 notes x 2 + dual drum(100 notes+200 notes) x 2 App. 300 notes x 4 drums		
Collection	2,000 notes X 1 / cassette * Capacity dependent on condition of notes		
Safe options	UL-291 24-hour, CENIII		
PC	FCC inside of safe		
Dimensions and weight	Model	Dimensions(mm) W×D×H	Weight (kg)
	UL-291 24-hour	340mm x 800mm x 860mm	300 kg
	CEN III	400mm x 830mm x 920mm	505 kg

Specifications are subject to change without notice. Please read the instruction manual carefully to ensure correct equipment usage. All figures, capacities and speeds quoted in this presentation are as tested by Glory Ltd. They may vary depending on usage conditions and are not guaranteed. The CI-50B was awarded with the "red dot award: product design 2018".

CI-50B AND CI-10C CONFIGURATION

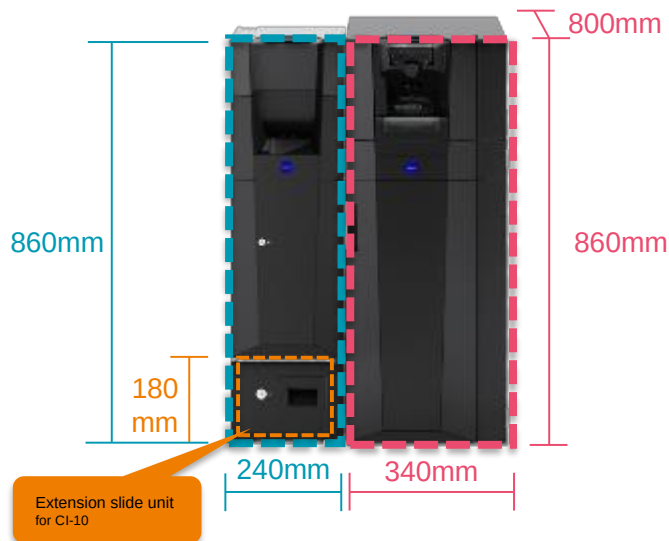
The below diagram illustrates the components that make up the CI-50B/CI-10C front office solution:





SPECIFICATIONS (EMEA)

CI-50 FOR FRONT OFFICE



Coin unit CI-10C / Note unit CI-50B
(UL-291 24-hour)

Collection cassette

CI-50B banknote recycler			
Deposit	Capacity of inlet: Up to 100 notes 100 notes(with cover opened) / 5 notes (with cover closed) Speed of cash in: 5 notes / sec.		
Dispense	Capacity of outlet: Up to 10 notes Speed of cash out: 4 notes / sec		
Recognition	HVE-200, Counterfeit detection Fit /unfit detection		
Recycle	Total 1,200 notes App. 300 notes x 3 + dual drum(100 notes+200 notes) x 1 App. 300 notes x 2 + dual drum(100 notes+200 notes) x 2 App. 300 notes x 4 drums		
Collection	2,000 notes X 1 / cassette * Capacity dependent on condition of notes		
Safe options	UL-291 24-hour, CENIII		
PC	FCC inside of safe		
Dimensions and weight	Model	Dimensions(mm) WxDxH	Weight (kg)
	UL-291 24-hour	340mm x 800mm x 860mm	300 kg
	CEN III	400mm x 830mm x 920mm	505 kg
CI-10C coin recycler for configuration with CI-50B			
Deposit	Capacity of inlet: 50 coins Speed of cash in: 5 coins / sec		
Dispense	Capacity of outlet: 50 coins Speed of cash out: 4 coins / sec		
Overflow box	750 coins		
Dimensions and weight	Model	Dimensions(mm) WxDxH	Weight (kg)
	UL-291 24-hour *(Extension slide unit for CI-10)	240mm x 483mm x 860mm (240mm x 450mm x 180mm)	64.5 kg (19.5 kg)
	CEN III *(Extension slide unit for CI-10)	240mm x 483mm x 920mm (240mm x 450mm x 240mm)	68.5 kg (23.5 kg)
*The slide unit is necessary when combining with CI-50B			

Specifications are subject to change without notice. Please read the instruction manual carefully to ensure correct equipment usage. All figures, capacities and speeds quoted in this presentation are as tested by Glory Ltd. They may vary depending on usage conditions and are not guaranteed. The CI-10 was awarded with the "red dot award: product design 2012" and the CI-50B was awarded with the "red dot award: product design 2018".

CI-50B AND CI-10C CONFIGURATION

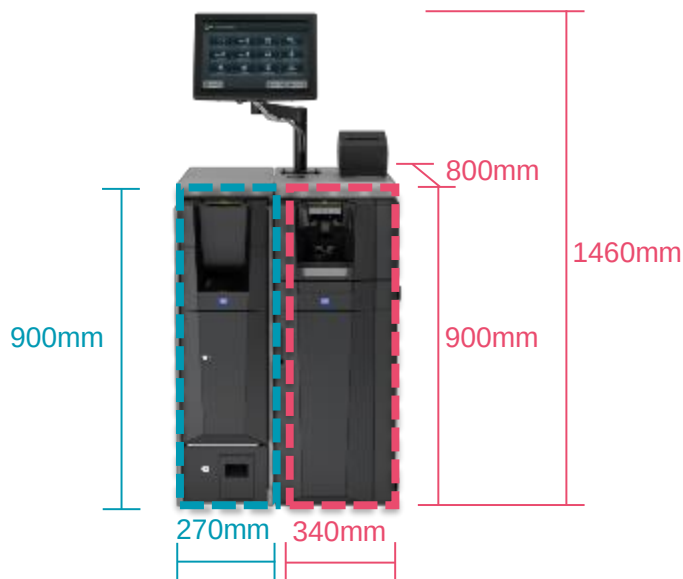
The below diagram illustrates the components that make up the CI-50B/CI-10C back office solution





SPECIFICATIONS (EMEA)

CI-50 FOR BACK OFFICE



Coin unit CI-10C / Note unit CI-50B
(UL-291 24-hour)

Collection cassette

CI-50B			
Deposit	Capacity of inlet: Up to 100 notes 100 notes(with cover opened) / 5 notes (with cover closed) Speed of cash in: 5 notes / sec.		
Dispense	Capacity of outlet: Up to 10 notes Speed of cash in: 4 notes / sec		
Recognition	HVE-200, Counterfeit detection Fit / unfit detection		
Recycle	Total 1,200 notes App. 300 notes x 3 + dual drum(100 notes+200 notes) x 1 App. 300 notes x 2 + dual drum(100 notes+200 notes) x 2 App. 300 notes x 4 drums		
Collection	2,000 notes X 1 / cassette * Capacity dependent on condition of notes		
Safe options	UL-291 24-hour		
Terminal	Terminal PC included controls CI-50B and CI-10C		
Dimensions and weight	Model	Dimensions(mm) WxDxH	Weight (kg)
	UL-291 24- hour	Without monitor 340mm x 800mm x 900mm	With monitor 315 kg
		With monitor 340mm x 800mm x 1460mm	
CI-10C			
Deposit	Capacity of inlet: 50 coins Speed of cash in: 5 coins / sec		
Dispense	Capacity of outlet: 50 coins Speed of cash out: 4 coins / sec		
Overflow box	750 coins		
Dimensions and weight	Model	Dimensions(mm) WxDxH	Weight (kg)
	UL-291 24- hour	Without extension top cover 270mm x 506mm x 900mm	With extension top cover 85 kg
		With extension top cover 270mm x 795mm x 900mm	

Specifications are subject to change without notice. Please read the instruction manual carefully to ensure correct equipment usage. All figures, capacities and speeds quoted in this presentation are as tested by Glory Ltd. They may vary depending on usage conditions and are not guaranteed. The CI-10 was awarded with the "red dot award: product design 2012" and the CI-50B was awarded with the "red dot award: product design 2018".

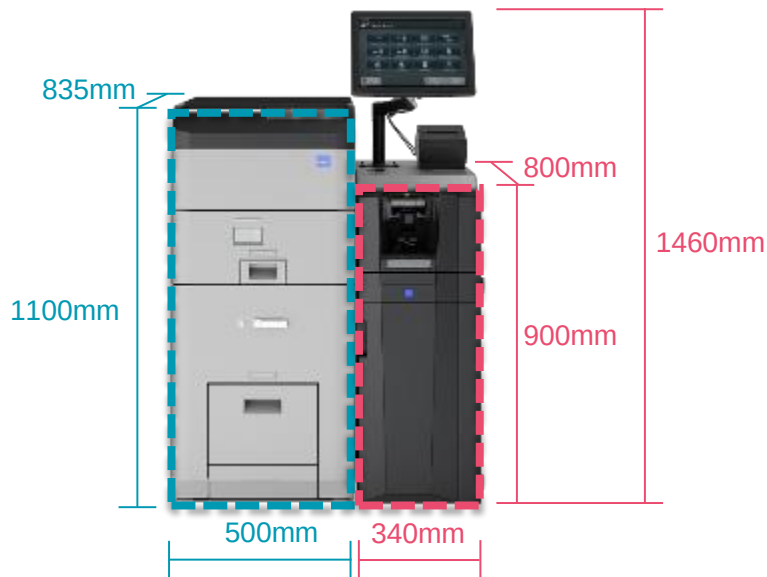
CI-50B AND CI-100C CONFIGURATION

The below diagram illustrates the components that make up the CI-50B/CI-100C back office solution



SPECIFICATIONS (EMEA)

CI-50B/CI-100C FOR BACK OFFICE



Coin unit CI-100C / Note unit CI-50B
(UL-291 24-hour)

Collection cassette

CI-50B			
Deposit	Capacity of inlet: Up to 100 notes 100 notes(with cover opened) / 5 notes (with cover closed) Speed of cash in: 5 notes / sec.		
Dispense	Capacity of outlet: Up to 10 notes Speed of cash in: 4 notes / sec		
Recognition	HVE-200, Counterfeit detection Fit / unfit detection		
Recycle	Total 1,200 notes App. 300 notes x 3 + dual drum(100 notes+200 notes) x 1 App. 300 notes x 2 + dual drum(100 notes+200 notes) x 2 App. 300 notes x 4 drums		
Collection	2,000 notes X 1 / cassette * Capacity dependent on condition of notes		
Safe options	UL-291 24-hour, CEN3		
Terminal	Terminal PC included controls CI-50B and CI-10C		
Dimensions and Weight	Model	Dimensions(mm) WxDxH	Weight (kg)
	CEN3	<u>Without monitor</u> 340mm x 800mm x 900mm *Monitor height : 560mm	<u>With monitor</u> 315 kg *Monitor weight :5Kg
CI-100C			
Deposit	Capacity of inlet: 500 coins Speed of cash in: 15 coins/sec		
Dispense	Capacity of outlet: 50 coins Speed of cash out: 5 coins / sec per stacker		
Overflow box	1,000 coins		
Dimensions and weight	Model	Dimensions(mm) WxDxH	Weight (kg)
	UL-291 24- hour	500mm x 835mm x 1100mm	270 kg

Specifications are subject to change without notice. Please read the instruction manual carefully to ensure correct equipment usage. All figures, capacities and speeds quoted in this presentation are as tested by Glory Ltd. They may vary depending on usage conditions and are not guaranteed. The CI-100 was awarded with the "red dot award: product design 2012" and the CI-50B was awarded with the "red dot award: product design 2018".

GLORY

CI-100 CASH RECYCLER

A Product Introduction



MANUAL CASH HANDLING ISSUES IN THE BACK OFFICE



- Back office manual cash handling (preparation of change funds, end-of-day counting, reconciliation) is a long, manual and intensive labour process
- Not productive and time consuming; counting cash and reconciling the end-of-day balance
- Prone to errors and discrepancies during reconciliation and cash tracking and inventory
- Cash exposure is prone to theft, shrinkage or counterfeit; can severely impact store profitability
- Time consuming to prepare cash deposit for banks or CIT companies
- No visibility of real-time status of cash inventory in the store

PRODUCT OVERVIEW



- The CI-100 cash recycling system consists of a banknote recycler (CI-100B) and a coin recycler (CI-100C), offering improved security and reduced cash handling time in retail applications; during day-open, shift change and day-close operations.
- CI-100 offers the cashier a quick and easy solution for handling cash in the back office of a retail environment, allowing managers more time to focus on their core business.

Specifications	
Terminal software	ISP-K06A
Note Recycler	<ul style="list-style-type: none"> ■ 5 Recycler Modules- Safe bag type ■ 6 Recycler Modules- Collection cassette type
Coin recycler	8 stackers
CI-SERVER	Required
TPG printer	Required



CASHINFINITY™ | BACK OFFICE RECYCLING SOLUTIONS



Large capacity cash recycler

Banknote & coin recycler

Connected to CI-SERVER

Deployed in the Back Office

Connected to Front Office CASHINFINITY™

Automated back office cash handling process

Eliminate all hand cash counting

Reduce time to prepare change funds

Reduce time of end of day reconciliation

No more discrepancies during reconciliation

Real time status and inventory

Secured back office cash management

Cash in / Cash out per cashier

Cash tracking





CASHINFINITY™ | BACK OFFICE RECYCLING SOLUTIONS

Improved fund efficiency

Quick cash deposit preparation (for CIT or bank)

High storage allows to reduce replenishment

High storage allows to optimise CIT pick up

Protect your investment

Optimised maintenance

Machine real status

Remote update and log



CI-100 DETAILS



Coin Inlet



Touch Display

Printer

Cash Inlet

Cash Outlet

Front Cover

Collection Cassette

Reject Box

Drop Tray/ Overflow Tray

Outlet Coin/ Collection Drawer



SPECIFICATIONS | CI-100B

Key items	CI-100B stacking safe bag	CI-100B Collection Cassette	CI-100 safe bag (free fall)
Recycling capacity	Up to 1,500 notes	Up to 1,800 notes	Up to 1,500 notes
Number of recycle modules	5	6	5
Total capacity	3,000** notes	3,800** notes	3,500**notes
Capacity of inlet (deposit)	Up to 150 notes	Up to 150 notes	Up to 150 notes
Capacity of outlet (dispensing)	Up to 100 notes	Up to 100 notes	Up to 100 notes
Interface cassette	Yes	Yes	Yes
Collection	Stacking safe bag	Collection cassette	Safe bag (free fall)
Safe	Yes	Yes	Yes
Dimensions (W × D × H)	UL 24h: 380 × 835 × 1,100mm	UL 24h: 380 × 835 × 1,100mm	UL 24h: 380 × 835 × 1,100mm

CASHINFINITY™ | BACK OFFICE SOLUTIONS

SPECIFICATIONS FOR COIN

Key items	CI-100C
Recycling capacity	15,000 (for EURO 8 denominations)
Number of recycle modules	8
Collection capacity	5,000(for EURO 10 cent coins)
Capacity of inlet (deposit)	500 (for EURO 10 cent coins)
Capacity of outlet (dispensing)	50 each denominations
Interface cassette	No
Cassette / stacking safe bag	No
Dimensions (W × D × H)	500 × 1,100 × 835mm



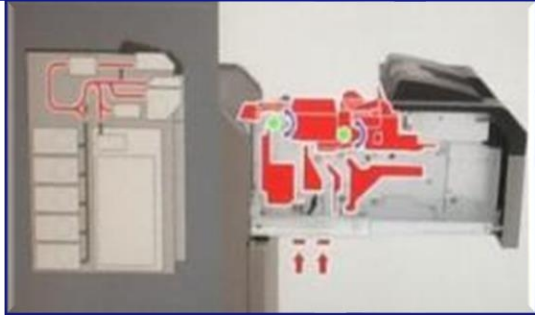
CASHINFINITY™ FEATURES

BACK OFFICE RECYCLING SOLUTIONS



“Follow me” LED Sign to help manager with banknote dispensing

Error Recovery Animation
If an error occurs, the POS screen can show a troubleshooting animation to resolve the problem



Counterfeit detection (banknote and coin)

Reject unfit coins and foreign object



CASHINFINITY™ | BACK OFFICE RECYCLING SOLUTIONS FEATURES



Separate recycling modules
for coins and banknotes

Deposit/dispensing : loose notes
and/or interface cassette



Interchangeability of modules' position

“Reject for Dispense unit” to
secure banknote dispensing



CASHINFINITY™ | BACK OFFICE RECYCLING SOLUTIONS

DEPOSIT/DISPENSE

- Notes can be deposited in 2 ways:
 - Using interface cassette from Front office (CI-10)
 - Manually by an operator
- Change funds (notes) are prepared by the back-office solution:
 - Directly into the interface cassette (Front office solution replenishment)
 - Directly via the outlet (the operator manually prepares the cash drawer)
- Direct coin dispense into the manual cash drawer



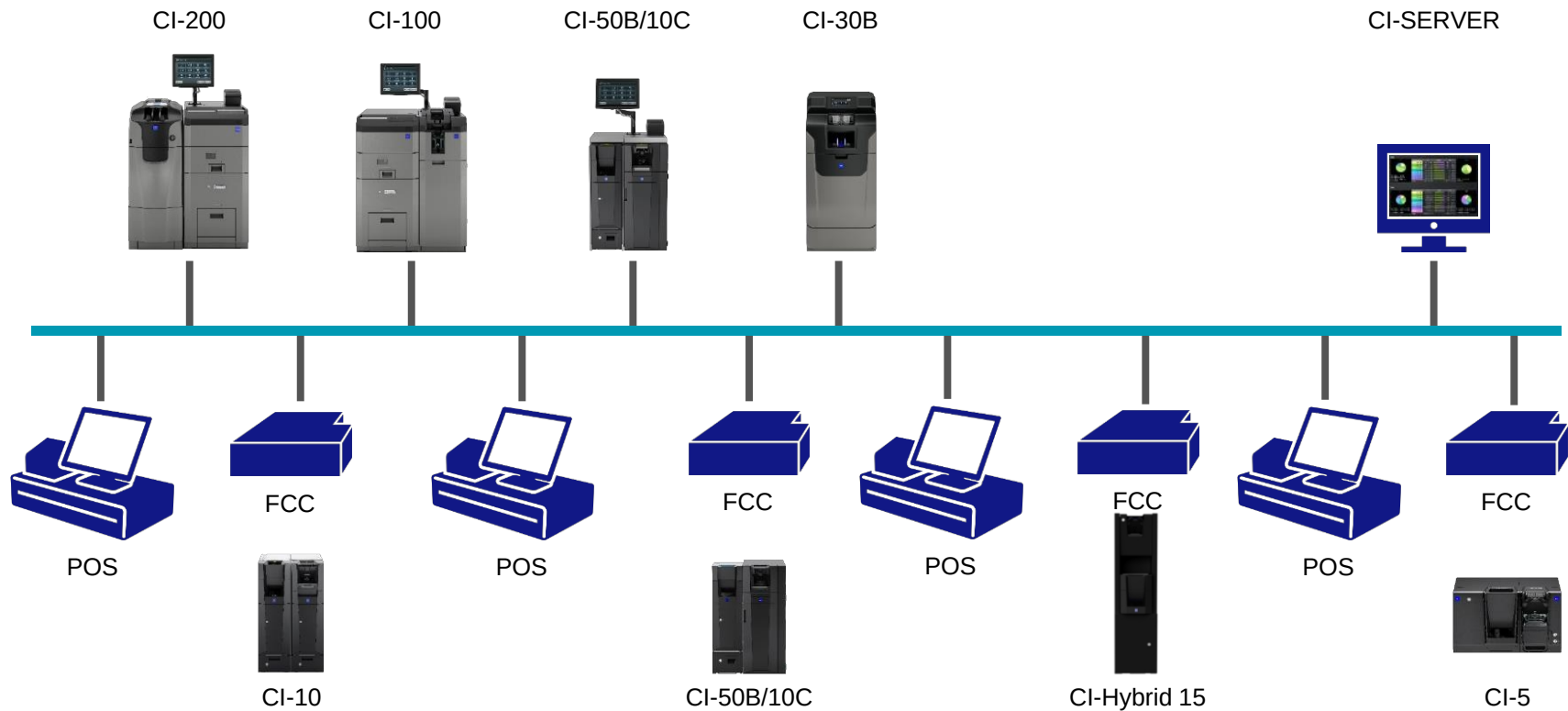


CI-SERVER PRODUCT INTRODUCTION





SYSTEM ARCHITECTURE



PRODUCT VALUE PROPOSITION

Centralised Device Management

- One place to manage all Front Office and Back Office devices.
- E-mail notification to facilitate quick corrective actions.
- Consolidated “End of Day” across all Front Office and Back Office devices.

Integrated Reporting

- Real-time sales and cash flow of Front Office and Back Office generated.
- Easy processing of reports stored as CSV and transferred via SOAP interface.
- Transaction logs track cash flow.

Ease of Setup

- Easy setup and management of all Tills, Drawers, Roles, and Users.
- Dual Access and role-based security access controls.
- Establish “End of Day” execution setup and automatic daily execution.

OVERVIEW



Centralised cash management for all Cash Infinity devices



Web application operated through a browser



Reports to track device status and monitor cash-in & cash-out flow



Flexible outbound communication of device status and cash transactions



Real-time device status e-mail notifications

PRODUCT CONFIGURATIONS

Configuration	Trial	Small	Middle	Standard
Maximum Number of Users	5	20	200	5000
Maximum Number of Front Office Devices	3	3	10	200
Maximum Number of Front Office Tills	3	3	10	200
Maximum Number of Back Office Devices	1	1	1	20
Maximum Number of Back Office Drawers	200	200	200	1500

- A User is an individual with secure and controlled access to Front Office and Back Office devices.
- A Front Office Device and a Front Office Till are one and the same.
- A Back Office Drawer is assigned to all Back Office Devices. A drawer keeps the cash received from a day's transactions.
- The maximum number of currency mixes is 20 for Small and 100 for Standard.
- The maximum number of roles that can be defined is 15.
- Real-time device status updates can be sent to up to 20 e-mail addresses.

Software Requirements



- Web Services:
 - Apache Tomcat 8.5.46
 - Apache HTTP Server 2.4.41
 - Microsoft .NET Framework 3.5 SP1

- Programming Language : OpenJDK 8

- File Transport:
 - FileZilla Server
 - SOAP over HTTP(S)

- Port used:
 - port 80 : http
 - port 443 : https

*Requirements for ISP-K07 ver.25 which is the latest software

Required environment



- OS:
 - Windows Server 2012
 - Windows Server 2012 R2
 - Windows Server 2016
 - Windows Server 2019

- Database:
 - SQL Server 2012 Express
 - SQL Server 2012 Standard
 - SQL Server 2016 Express
 - SQL Server 2016 Standard
 - SQL Server 2019 Express
 - SQL Server 2019 Standard

- Browser
Internet Explorer 11

*PC or virtual server to be provided by customer

*Ethernet port required for external connectivity



TARIFS



CashInfinity Range Front-Office

SURCHARGE DEPUIS LE 1^{IER} JANVIER 2022

Alors que la pandémie mondiale continue à générer des défis dans nos vies et nos affaires, nous tenons à vous remercier de votre fidélité et de votre confiance continue à la marque Glory. Les marchés et industries du monde entier sont actuellement confrontés à une pression sans précédent sur leurs chaînes d'approvisionnements, nous le constatons chaque jour dans nos vies quotidiennes et professionnelles.

Glory n'a pas été épargnée par cette pression, et notre processus de fabrication a connu une inflation des prix significative, inévitable, et prolongée au sein de notre chaîne d'approvisionnement externe, en raison d'une pénurie mondiale de matières premières et de composants clés, ainsi qu'à cause de perturbations du fret maritime et d'autres défis logistiques rencontrés suite à la pandémie.

Parallèlement à son attention constante à la qualité, Glory a dû rester vigilant, et continuera en ce sens, sur la gestion des coûts. Au cours des 18 derniers mois, Glory a consenti tous les efforts nécessaires, et a travaillé sans relâche pour minimiser l'impact de la crise sur nos partenaires et clients. Cependant, en raison de la demande croissante et des pressions sur notre chaîne d'approvisionnement, Glory est aujourd'hui incapable de continuer à absorber l'augmentation du coût du fret et des matières premières (comme nous l'avons fait depuis un an et demi) et doit donc répercuter une partie de ces coûts supplémentaires sur ses clients et partenaires.

En conséquence, et croyez bien qu'il ne s'agit pas d'une décision que nous avons prise à la légère, Glory a introduit un supplément sur tous les bons de commande pour les matériels reçus à depuis le 1er janvier 2022, avec un surcoût de 5,7% qui sera appliqué et identifié par une ligne distincte sur votre facture. Nous restons à votre disposition pour répondre à toute éventuelle question que vous pourriez vous poser, et dans l'intervalle, nous continuerons à communiquer avec vous au fur et à mesure de l'évolution de cette situation.

Vincent Nakache

President EMEA
Senior Executive Officer Glory Ltd

FRONT-OFFICE PRICING OVERVIEW – CI5



CI5	Tarif client final
Module billet et pièces	9.000
Installation	460
Site Survey (on-site)	385
Training (on-site)	435
Accessoires: Ecran client	481
Accessoires: Cassette billet supplémentaire	420

- L'installation d'un CI-5 ne peut avoir lieu que si l'ouverture dans le comptoir a été réalisée et complétée en amont, sauf en cas de fixation sur le comptoir.
- Si le site d'installation n'est pas prêt le jour de l'installation et que cette information n'a pas été communiquée à GLORY au minimum le jour précédent, des coûts supplémentaires seront facturés pour compenser le déplacement et le temps de notre technicien.

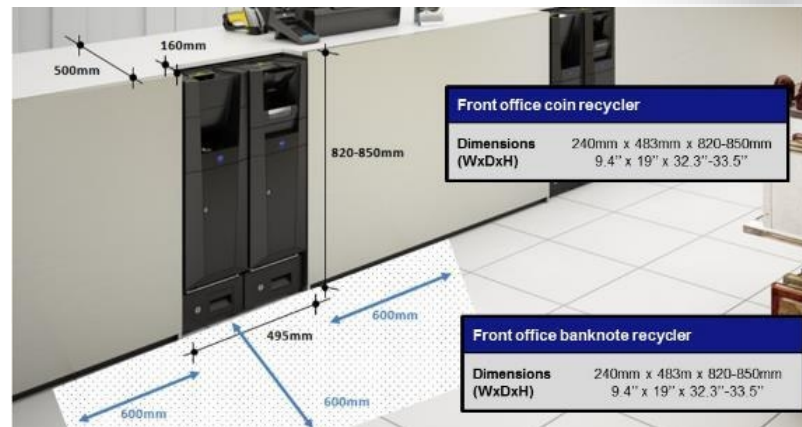


FRONT-OFFICE PRICING OVERVIEW – CI-10

CI10 avec stacking collection cassette	Tarif client final
Module billet et pièces	14.870
Installation (avec ou sans ancrage au sol)	460
Site Survey (on-site)	385
Training (on-site)	435
Accessoires: Ecran client	481
Accessoires: Cassette billet supplémentaire	515



- Lors d'une installation d'un CI10, la machine peut être ancrée au sol pour si le client final le souhaite. Toutefois, nous aurons besoin d'une confirmation officielle de votre part ainsi que l'assurance qu'il n'y ait pas de chauffage au sol, de buses ou de câbles sur l'endroit d'ancrage. En cas de problème lors de l'ancrage, GLORY décline toute responsabilité pour de potentiel dégâts.
- L'installation d'un CI-10 ne peut avoir lieu uniquement si l'ouverture dans le comptoir a été réalisée et complétée avant,.
- Si le site d'installation n'est pas prêt le jour de l'installation et que cette information n'a pas été communiquée à GLORY au minimum le jour précédent, des coûts supplémentaires seront facturés pour compenser le déplacement et le temps de notre technicien.



FRONT-OFFICE PRICING OVERVIEW – CI-HYBRID15

CI-Hybrid 15	Tarif client final
Module billet et pieces + balance metalique blanc	13.485
Installation (avec ou sans ancrage au sol)	460
Site Survey (on-site)	385
Training (on-site)	435
Accessoires: Ecran client	481
Accessoires: Cassette billet supplémentaire	420

- Le meuble standard est blanc, métallique et du poids de près de 80 kg.
- Si vous souhaitez une autre couleur, nous pouvons fournir ce dernier avec le code couleur précis, de manière gratuite à partir de 20 unités commandés. Si nous disposons d'un meuble noir de manière temporaire, nous pouvons vous en informer.
- Lors de l'installation du CI-Hybrid 15, le module billet et pièces sont fixé dans le meuble. Le meuble métallisé peut être ancré au sol s'il le client final le souhaite. Toutefois, nous aurons besoin d'une confirmation officielle de votre part ainsi que l'assurance qu'il n'y ait pas de chauffage au sol, de buses ou de câbles sur l'endroit d'ancrage. En cas de problème lors de l'ancrage, GLORY décline toute responsabilité pour de potentiel dégâts.



CONDITIONS (1)

- **Conditions:** 50% à la commande, 50% lors de la livraison du matériel.
- **Validité des tarifs:** jusqu'au 31 mars 2023 incl.
- **Délais de livraison:** veuillez contacter votre représentant GLORY pour des délais plus précis.
- **Garantie:** 12 mois à partir de la livraison. S'applique aux problèmes pouvant être liés à la production de la machine..
- **Service:** Cyber-Web communiquera les besoin du client en matière de contrat de service (délais d'intervention, jours d'interventions à couvrir, etc.). Le représentant GLORY reviendra ensuite vers Cyber-Web et le client final avec une proposition adaptée.





CONDITIONS (2)

- Les clients à qui Cyber-Web propose les solutions GLORY devront exclusivement utiliser les logiciels Cyber-Web et/ou le module GLORY CI-Activate.
- L'installation du matériel se fait exclusivement par des techniciens GLORY.
- Dans le cas de figure où GLORY transmet un lead à Cyber-Web, ce dernier informera GLORY régulièrement sur le statut des projets. Cyber-Web informera également GLORY sur les projets dans lesquels GLORY a été intégré.
- De nouvelles machines seront installées uniquement lorsque les factures précédentes sont entièrement réglées.
- Toute information dans ce document ou dans les échanges mails ou téléphoniques doivent être considérés comme confidentiels.

CE DOCUMENT VOUS DONNE UN APERÇU DE NOS PRODUITS ET DE NOS TARIFS MAIS NE DOIT PAS ÊTRE CONSIDÉRÉ COMME UN CONTRAT DE PARTENARIAT OFFICIEL.